



## Reversible, 2-color, Alpaca Headband

I got hooked on the warmth of winter headbands several years ago and have been waiting for just the right inspiration to design my own. I think I have just what I was looking for. In this version, the plush, lightweight, and warm headband uses an interesting textural combination of two quite different yarns: 100% baby alpaca yarn and a merion/donegal tweed yarn. Although the alpaca is a sport and the tweed a DK, they work well together in this application. Of course, any sport-weight yarn yielding the gauge is acceptable so experiment. A simple Danish two-color design is charted and is incorporated into a two-color reversible double fabric. This is a great project to begin to master the reversible knitting technique. The result is a stunning headband and easy to wear.



<p><i>Size and Finished Measurements</i></p> <ul style="list-style-type: none"> <li>• Small (Large) <ul style="list-style-type: none"> <li>○ Small: 20" head circumference</li> <li>○ Large: 22" head circumference</li> </ul> </li> </ul> <p>Pattern written for Small with Large given in parentheses.</p>	<p><i>Materials</i></p> <ul style="list-style-type: none"> <li>• 1 – 50 g Sport Weight (110 yds) 100% baby alpaca - white (CC)</li> <li>• 1 – 50 g Sport Weight (110 yds) 100% baby alpaca – your choice (MC)</li> <li>• 16" circular knitting needle size 3</li> <li>• Stitch markers</li> </ul>
<p><i>Gauge</i></p> <p>20 stitches / 4 inches in reversible knitting</p>	<p><i>Skills</i></p> <ul style="list-style-type: none"> <li>• working 2 yarn color strands simultaneously</li> <li>• knitting in the round</li> <li>• long-tail cast on</li> </ul>

### *Stitch abbreviations and notes*

Complete instructions for reversible 2-color knitting can be found in “Double Knitting - Reversible Two-Color Designs” by M’Lou Baber. Although within the following instructions are basic guidelines to execute reversible, 2-color knitting, please refer to book cited for more detailed instruction.

The headband uses circular, reversible knitting which can be easier to master than working back and forth.

**\*NOTE:** The knit stitch of each round will be the right side and always facing you, whereas the purl stitch of each round will be the formation of the right side facing away from you. Pattern chart provides pattern for color use of knit stitch of each round and therefore provides pattern for right-side facing you. The subsequent purl stitch found on the needle will be completed in the opposite color to the knit stitch just completed. Please note also that both strands need to be moved to the front of work **after** the knit is completed and **before** the purl stitch is executed. Then, both yarns must be moved to the back of work after completion of purl stitch and before the next knit stitch is executed.

## Instructions

Holding 2 strands of MC together working as single strand, cast on 90 (100) stitches using long-tail method. On needle will be 90 (100) double-stranded stitches which translates into 180 (200) individual, single-stranded stitches.

**Setup Rnd 1:** Continue to work with 2 strands of MC and keeping the double-stranded cast on stitches worked together, \* k1, p1\* repeat \*\* across.

Join to work in round placing marker to identify round beginning. Cut one of the strands of MC and pick up to use one CC strand in reversible knitting. Work 2-color reversible knitting technique for subsequent rounds where now working with single strands of both MC and CC.

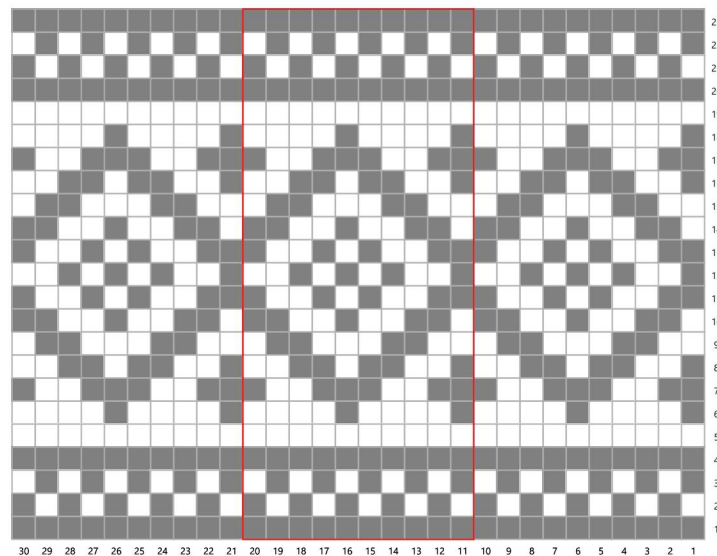
**Rnd 1 (Setup Rnd):** Working Row 1 of charted pattern in Fig. 1. in reversible knitting technique, separate the double-strands of yarn that make up each stitch to yield 2 stitches – the knit stitch for the right side facing, and the subsequent stitch being the purl stitch for right side facing away from work. (See \*Note for further instructions on reversible knitting technique)

**Rnds 2 - 23:** Follow charted pattern in Fig. 1 for 9 (10) repeats across individual rounds slipping marker between rounds.

**Rnd 24:** Dropping CC, and using one strand of MC, \*k1, p1 \*. Repeat \*\* around to marker.

**Rnd 25:** Picking up additional strand of MC and holding the 2 strands of MC together, k2tog, p2tog across. Bind Off loosely using 2 strands MC.

Fig. 1: Chartered Headband Design



Key

- 10-stitch repeat
- MC
- CC
-